

# LKR Chain Motor Connectors

New for 2019, the LKSR 7 takes Link's long history of innovation with the "soca" style 19-pin connector and brings it to the 7-pin version which is widely used for chain motor applications.

With the addition of the standard P7 and P14 chain motor fly cable connectors, Link is maintaining the basic principle of strength and reliability of the military connectors. The restyling and construction of this range have been specifically studied to meet the needs of the entertainment industry.

LKR configurations and their wiring standards, well established in the market, allow easy connection with all existing cable assemblies, chain motors, and controllers.



## LKSR 7

- LKSR 7 is UL Recognized for 25A of continuous current (20A CNR)
- 7 pins in male/female panel and cable versions
- Anti spinning system
- Guaranteed for over 2000 coupling operations
- IP67 rated when mated

## LKR P7 and P14

- 7 or 14 pins in male/female panel and cable versions
- P7 is UL Recognized for 23A of continuous current (20A CNR)
- P14 is UL Recognized for 13A of continuous current (10A CNR)
- Excellent resistance against accidental unlocking caused by shocks and vibrations
- Audible snap in quick bayonet lock
- Guaranteed for over 2000 coupling operations
- IP68 rated when mated
- Roller studs for easier coupling
- M32 cable strain relief as standard

## Options

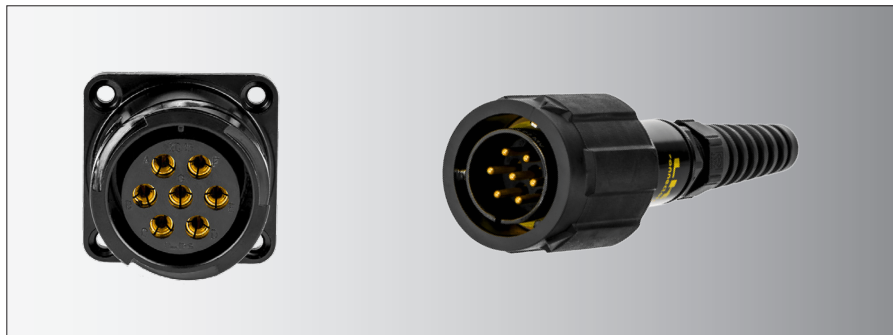
- Black and colored (blue, red, green, yellow) rubber locking rings
- Male and female connector dust caps
- Solder or crimp pins
- PG16 and PG21 cable relief with locknut or anti-bending spring



**LKSR 7:** M32 plastic spring skin top as standard for cable connectors.



**LKR P14:** M32 plastic spring skin top as standard for cable connectors.



**LKR P7:** M32 plastic spring skin top as standard for cable connectors.



Assemblies available, please contact Link for details and pricing.

## STANDARD WIRING



## LKR P7 Connectors

### Cable mounting

Female



**LKR P7 FV** 7 poles

Male with Rubber Locking Ring



**LKR P7 MV P** 7 poles

### Panel mounting

Female



**LKR P7 FP** 7 poles

Male



**LKR P7 MP** 7 poles

## LKR P14 Connectors

### Cable mounting

Female



**LKR P14 FV** 14 poles

Male with Rubber Locking Ring



**LKR P14 MV P** 14 poles

### Panel mounting

Female



**LKR P14 FP** 14 poles

Male



**LKR P14 MP** 14 poles

## LKSR 7 Connectors

### Cable mounting

Female



**LKSR M LFS M32 A** 7 poles

Male with Locking Ring



**LKSR M LMS A M32 A** 7 poles

### Panel mounting

Female



**LKSR M LFS M32 A** 7 poles

## Accessories

### Dust cap



**LK 20 TPMN**

For connectors P7/14 without locking ring

**LK 20 TPFN**

For connectors P7/14 with locking ring

### Rubber locking ring



**LK 20 RL \*\***

For LK P7/P14

Items subject to Minimum Order Qty

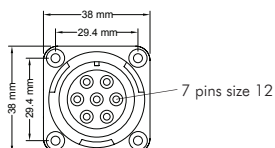
\*\*



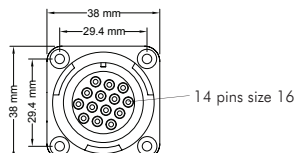
### Robust strain relief



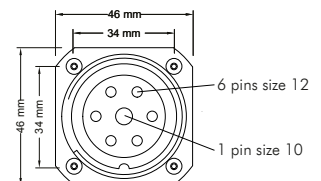
M32 plastic spring standard configuration. PG16 and PG21 are available on request and subject to minimum order quantity. Mesh cable gland available.



**LKR P7**  
Size 20



**LKR P14**  
Size 20



**LKSR 7**