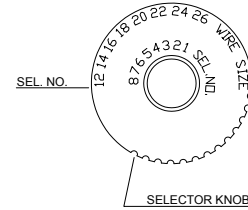


LK Tools

LK CRIMP

The crimp contact option for the LKA, LKS and LKH range of connectors, allows large assembly time savings, and gives a perfect, reliable and durable connection with the use of LK CRIMP or LK CRIMP PN with Turret tools (LK TR).



LK CRIMP

Crimping tool for LKA-LKS-LKH

LK CRIMP PN

Pneumatic crimping tool for LKA-LKS-LKH

Contact Size	AWG 26	AWG 24	AWG 16	AWG 14	AWG 12	Wire Size
20	1	2				Sel. No.
18	1	2				
16	1	2				
12			6	7	8	

POSITIONER

Every pin size has its own positioner (LK PS..), to be mounted on the universal turret LK TR. The mounting position is selected following the female or male contact type.



LK PS LKS	Positioner for LKS pins
LK PS 12	Positioner for pins size 12 LKH
LK PS 16	Positioner for pins size 16 LKA 13-85
LK PS 18	Positioner for pins size 18 LK 150
LK PS 20	Positioner for pins size 20 LK 200

TURRET

The turret, fitted on the LK CRIMP, allows the positioner's assembly.



LK TR Turret

DRIVE PIN

Female contacts may be inserted with the aid of the plug LK SP (12, 12 LKS, 16, 18 or 20) as shown in the drawing.



LK SP LKS	Drive pin for LKS
LK SP 12	Drive pin size 12 for LKH
LK SP 16	Drive pin size 16 for LKA 13-85
LK SP 18	Drive pin size 18 for LK 150
LK SP 20	Drive pin size 20 for LK 200
LK SPCATM	Male drive pin for Gigabit contacts
LK SPCATF	Female drive pin for Gigabit contacts

INSERTER

The insertion of contacts is made by the inserter LK INS (12, 16, 18 or 20 following the contact size). For easier contact insertion use an alcohol lubricant.



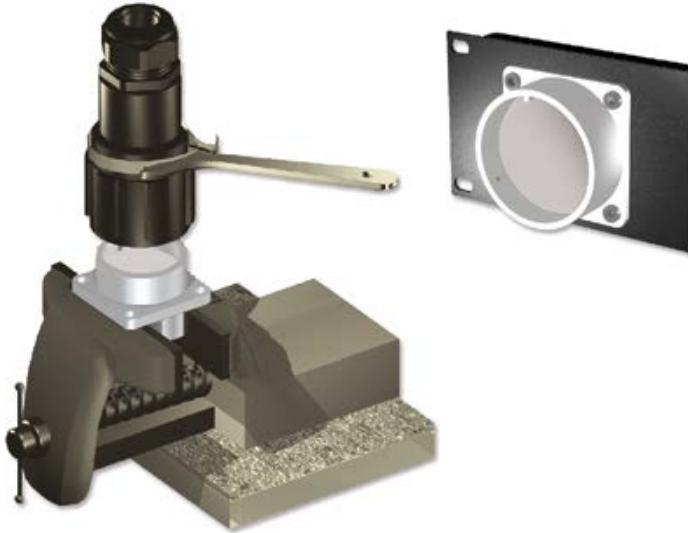
LK INS12	Inserter for pin size 12 (LKS-LKH)
LK INS16	Inserter for pin size 16 (LK 13-85 poles)
LK INS18	Inserter for pin size 18-20 (LK 150-200 poles)
LK INS/CAT	Inserter for Gigabit contacts



LK Tools

DUMMY

Dummy range is available for the assembly of the LK connector back shells. Dummy tools can be fixed to a panel or gripped in a vice: lock the back shell in place by means of the LK K BK key. Once the LK K has been fixed to the panel or to the vice, place the connector for assembly in the mating position. Next, screw the back shell firmly into place with the LK K BK key. This allows to screw the backshell at best, avoiding unscrewing during operations.



LK K 20	Dummy for size 20 (13 poles)
LK K 20LR	Dummy for size 20 (13 poles with locking ring)
LK K 24	Dummy for size 24 (25 poles)
LK K 24LR	Dummy for size 24 (25 poles with locking ring)
LK K 28	Dummy for size 28 (37 poles)
LK K 28LR	Dummy for size 28 (37 poles with locking ring)
LK K 32	Dummy for size 32 (54 poles)
LK K 32LR	Dummy for size 32 (54 poles with locking ring)
LK K 40	Dummy for size 40 (85/150/200 poles)
LK K 40LR	Dummy for size 40 (85/150/200 poles with locking ring)

EJECTOR HANDLE

To extract the contacts the use of LK EX MNUNIV ejector is required; it contains the metal points suitable for the different sizes (LK EX..), both for female and male contacts.



LK EX MNUNIV Handle

The handle on which the ejector points are screwed on. This unit also contains them internally by opening the rear lid.

EJECTOR

The main contacts used in the LK range can be contained inside the LK EX MNUNIV and must be screwed into the front part of the Handle.



LK EX12F	Female size 12 LKS
LK EX12F R	Female size 12 LKH and Speaker Connectors
LK EX12M	Male size 12 LKS
LK EX12M R	Male size 12 LKH and Speaker Connectors
LK EX16F	Female size 16 for connector LK
LK EX16M	Male size 16 for connector LK
LK EX18F	Female size 18 for connector LK
LK EX18M	Male size 18 for connector LK
LK EX20F	Female size 20 for connector LK
LK EX20M	Male size 20 for connector LK
LK EX/CAT M	Male for Gigabit contacts
LK EX/CAT F	Female for Gigabit contacts

LK K BK KEY



LK K BK/KIT LK tighten tool-strap wrench-set of two

Recommended Tightening Torque

Shell/Backshell		
Shell Size	Coupling Torque Maximum (Nm)	Uncoupling Torque Minimum (Nm)
16S	2.71	0.45
18	3.16	0.56
20	3.61	0.68
22	4.06	0.78
24	4.96	0.78
28	5.88	0.90
32	7.35	1.01
40	8.34	1.47

PG & METRIC THREAD	Torque Backshell/Clamp (Nm)	Torque for cap nut (Nm)
PG11	3.75	2.50
PG13.5	3.75	2.50
PG16	5.00	3.30
PG21	7.50	5.00
PG29	7.50	5.00
PG36	7.50	5.00
PG42	7.50	5.00
M40 x 1.5	13.00	13.00



Cable Relief

SKIN TOP Cable Clamp

The use of SKIN TOP cable clamps, which are important accessories in the industrial field, allows perfect connection of any cable to all types of equipment, ensuring perfect functioning. They are mostly used in the audio-lighting environment, as cable clamps for multipin connectors and cable entries in various types of boxes, e.g. stageboxes. SKIN TOP cable clamps allow easy and quick installation. The new trapezoid shaped multiple thread allows rapid tightening. The IP 68 watertight cable clamp is mounted on the tightening nut, ensuring a firm grip with no traction and no loosening risk.



SKIN TOP WITH SPRING

Cable clamp with anti-bend spiral, range from PG 11 to PG 21. It provides additional safety to the cable preventing it to be curved over its bend radius. Black (RAL 9005). Water-tightness degree IP 68.

METAL SKIN TOP

Available on request, nickel-plated brass cable clamp for heavy-duty applications. With all the advantages of the Skin Top range. Water-tightness degree IP 68. Range from PG 11 to PG 36.

Cable O.D.	
From 5 to 10 mm	PG11
From 6 to 12 mm	PG13,5
From 10 to 14 mm	PG16
From 13 to 18 mm	PG21
From 14 to 25 mm	PG29

SK TOP PM13	PG11 for cables 5-10 mm
SK TOP PM19	PG13,5 for cables 6-12 mm
SK TOP PM35	PG16 for cables 10-14 mm
SK TOP PM54	PG21 for cables 13-18 mm

SK TOP MN13	PG11 for cables 5-10 mm
SK TOP MN19	PG13,5 for cables 6-12 mm
SK TOP MN35	PG16 for cables 10-14 mm
SK TOP MN54	PG21 for cables 13-18 mm
SK TOP MN85	PG29 for cables 14-25 mm
SK TOP MN150	PG36 for cables 22-32 mm

SKIN TOP

SK TOP PN13	PG11 for cables 5-10 mm
SK TOP PN19	PG13,5 for cables 6-12 mm
SK TOP PN35	PG16 for cables 10-14 mm
SK TOP PN54	PG21 for cables 13-18 mm
SK TOP PN85	PG29 for cables 14-25 mm
SK TOP PN150	PG36 for cables 22-32 mm

METAL NUT

SK TOP MD13	For SK TOP MN 13
SK TOP MD19	For SK TOP MN 19
SK TOP MD35	For SK TOP MN 35
SK TOP MD54	For SK TOP MN 54
SK TOP MD85	For SK TOP MN 85
SK TOP MD150	For SK TOP MN 150

PLASTIC NUT

SK TOP PD13	For SKINTOP PG11
SK TOP PD19	For SKINTOP PG13,5
SK TOP PD35	For SKINTOP PG16
SK TOP PD54	For SKINTOP PG21
SK TOP PD85	For SKINTOP PG29
SK TOP PD150	For SKINTOP PG36

When Skin tops are used for panel mount, a nut (plastic or metal) will be required

Mesh cable gland & grip

The MCG grips series features a patented swivel design that provides superior cable pull-out protection. This unique design virtually eliminates premature mesh fatigue thereby maximizing both cable and connection life so that downtime and costs are greatly reduced. This is the only swivel grip for extreme flexing applications that is specified by industry experts to meet their flexing requirements.

MESH CABLE GLAND

MCG PG1108	Mesh cable gland PG11 - Cable OD from 11.10 mm to 12.70 mm
MCG PG1609	Mesh cable gland PG16 - Cable OD from 11.10 mm to 14.30 mm
MCG PG1611	Mesh cable gland PG16 - Cable OD from 14.30 mm to 17.40 mm
MCG PG2111	Mesh cable gland PG21 - Cable OD from 14.30 mm to 17.40 mm
MCG PG2114	Mesh cable gland PG21 - Cable OD from 19.10 mm to 22.20 mm
MCG PG2914	Mesh cable gland PG29 - Cable OD from 19.10 mm to 22.20 mm
MCG PG2916	Mesh cable gland PG29 - Cable OD from 22.20 mm to 25.40 mm
MCG PG2918	Mesh cable gland PG29 - Cable OD from 25.40 mm to 28.60 mm
MCG PG2920	Mesh cable gland PG29 - Cable OD from 28.60 mm to 31.80 mm
MCG PG3618	Mesh cable gland PG36 - Cable OD from 25.40 mm to 28.60 mm
MCG PG3620	Mesh cable gland PG36 - Cable OD from 28.60 mm to 31.80 mm



MESH CABLE GRIP

MCG SE013	Mesh cable grip - Cable OD from 12.70 mm to 13.20 mm
MCG SE014	Mesh cable grip - Cable OD from 16.00 mm to 18.80 mm
MCG SE015	Mesh cable grip - Cable OD from 19.10 mm to 22.90 mm
MCG SE016	Mesh cable grip - Cable OD from 25.40 mm to 31.50 mm
MCG SE017	Mesh cable grip - Cable OD from 31.80 mm to 37.80 mm